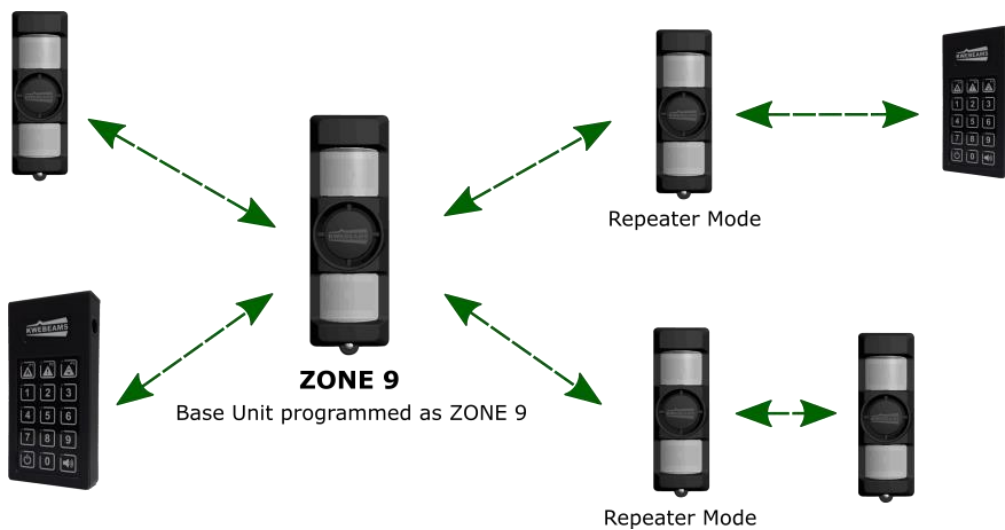




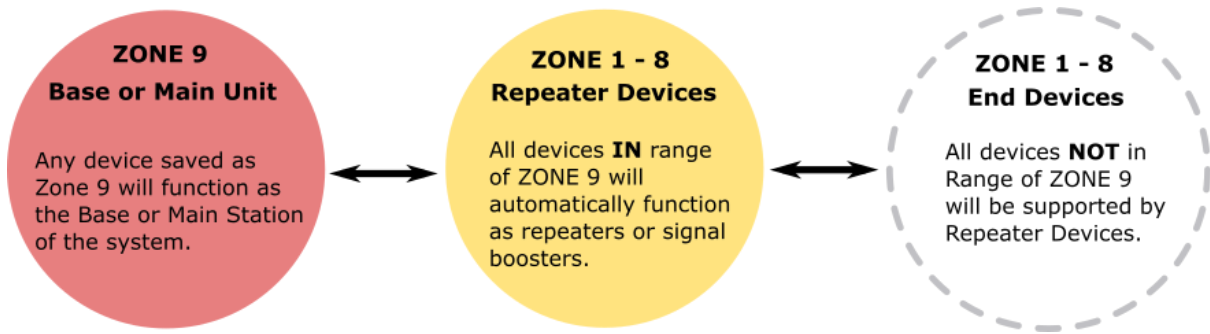
## EXAMPLE CONFIGURATIONS



**ZONE 9** is the Heart of the KwêBeam system & all configurations must have one device saved as ZONE 9. It is recommended to install ZONE 9 at the most central position of all beams. All devices in range of ZONE 9 will automatically have a repeater function to support devices not in range. The configurations listed on this page illustrate the Kwêbeam concept & can be customized for specific application requirements.



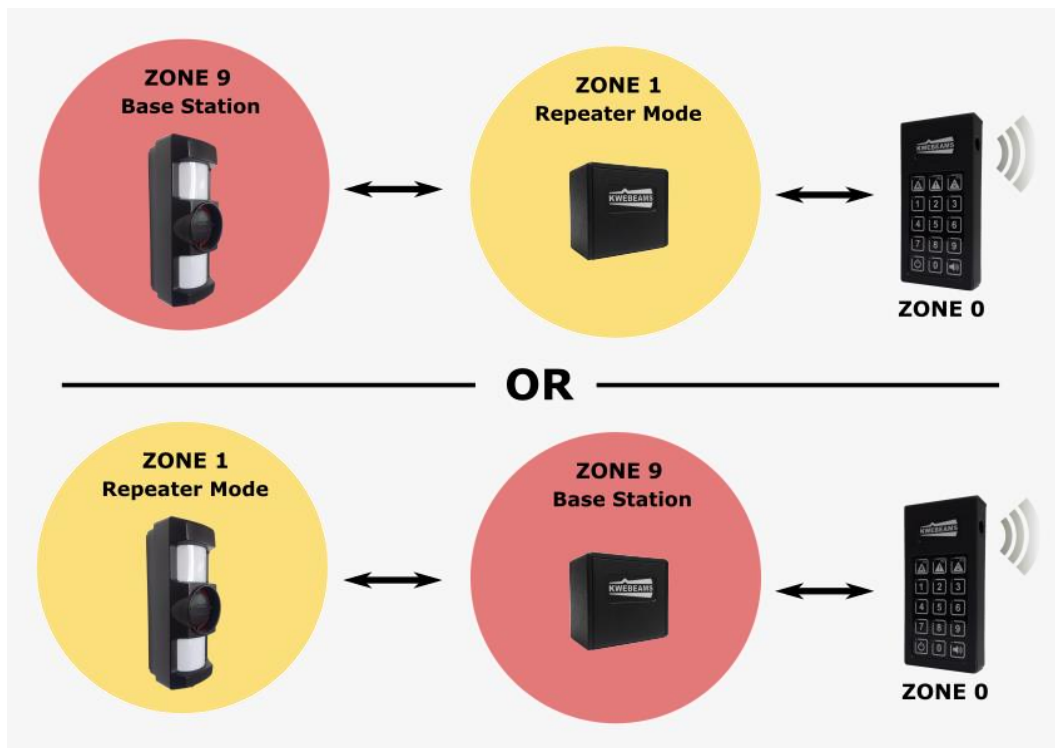
Additional devices can be added to any of the configuration.



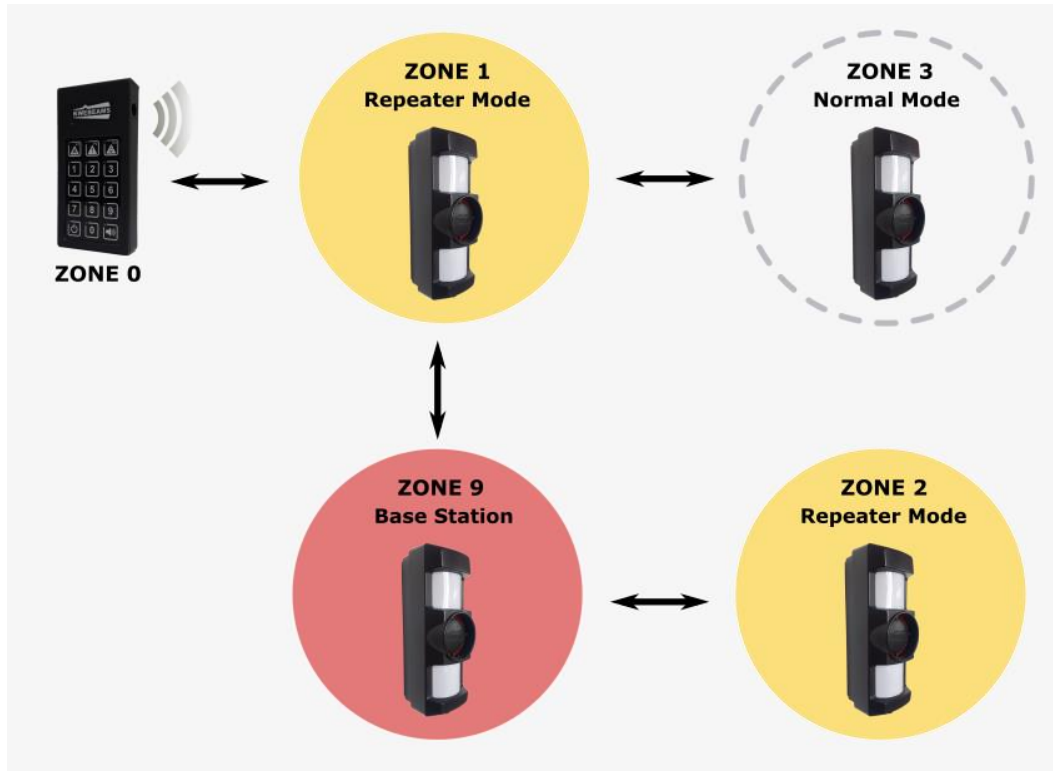
### Basic Single Beam system



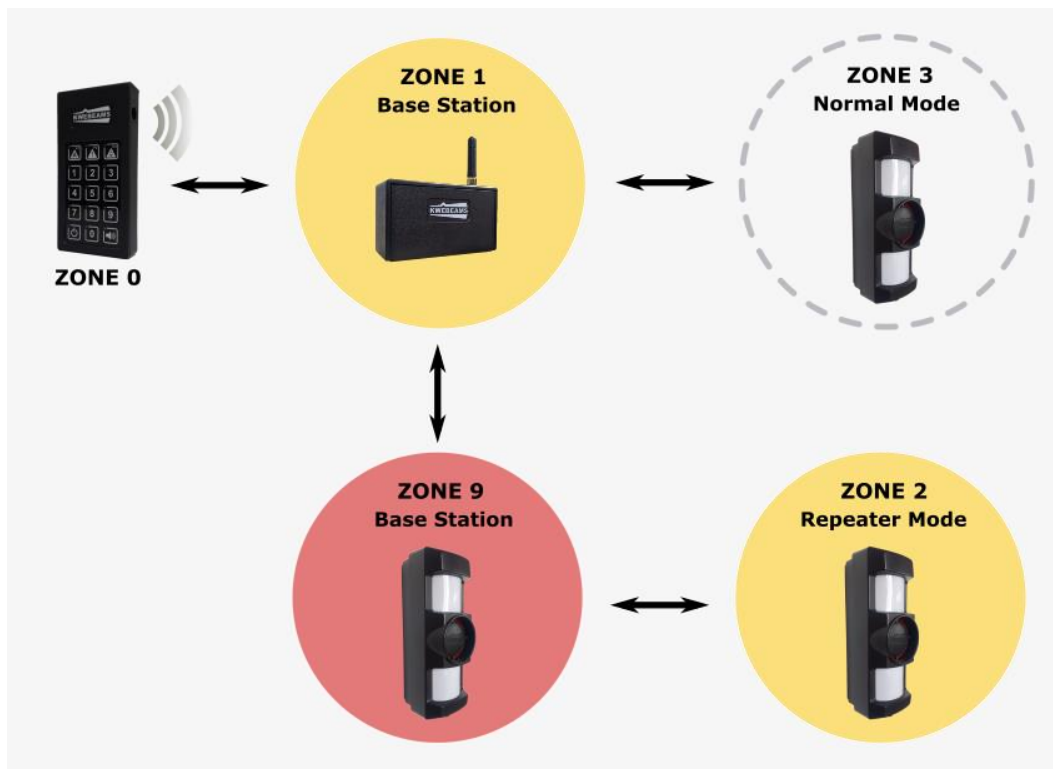
### Using Repeater modules in the system



## Basic 4 Beam system



## Using a GSM module in the system



## Split the system to cover remote areas

